



# GROUP NO. 948, T. 15 N., R. 25 E., KATEEL RIVER MERIDIAN, ALASKA

The geographic positions shown below, in NAD\_83(2011) (EPOCH: 2010.0000), define the location of fixed but unmarked corners within the township.

ID	LATITUDE (N)	LONGITUDE (W)
1	607.75	700500
2	612.54	700500
3	612.54	700500
4	612.54	700500
5	612.54	700500
6	612.54	700500
7	612.54	700500
8	612.54	700500
9	612.54	700500
10	612.54	700500
11	612.54	700500
12	612.54	700500
13	578.59	700400
14	578.59	700400
15	578.59	700400
16	578.59	700400
17	578.59	700400
18	578.59	700400
19	578.59	700400
20	578.59	700400
21	578.59	700400
22	578.59	700400
23	578.59	700400
24	578.59	700400
25	578.59	700400
26	578.59	700400
27	578.59	700400
28	578.59	700400
29	578.59	700400
30	578.59	700400
31	578.59	700400
32	578.59	700400
33	578.59	700400
34	578.59	700400
35	578.59	700400
36	578.59	700400

### LEGEND

- ◆ = Original Corner (Recovered)
- ◇ = Original Corner (Not Recovered)
- = New Corner (Monumented)
- = New Corner (Not Monumented)
- = Surveyed Line
- - - = Random and True Line

REFERENCE SHOULD BE MADE TO SHEETS 1-6 FOR SURVEY GROUP INFORMATION

UNITED STATES DEPARTMENT OF THE INTERIOR  
BUREAU OF LAND MANAGEMENT  
Anchorage, Alaska

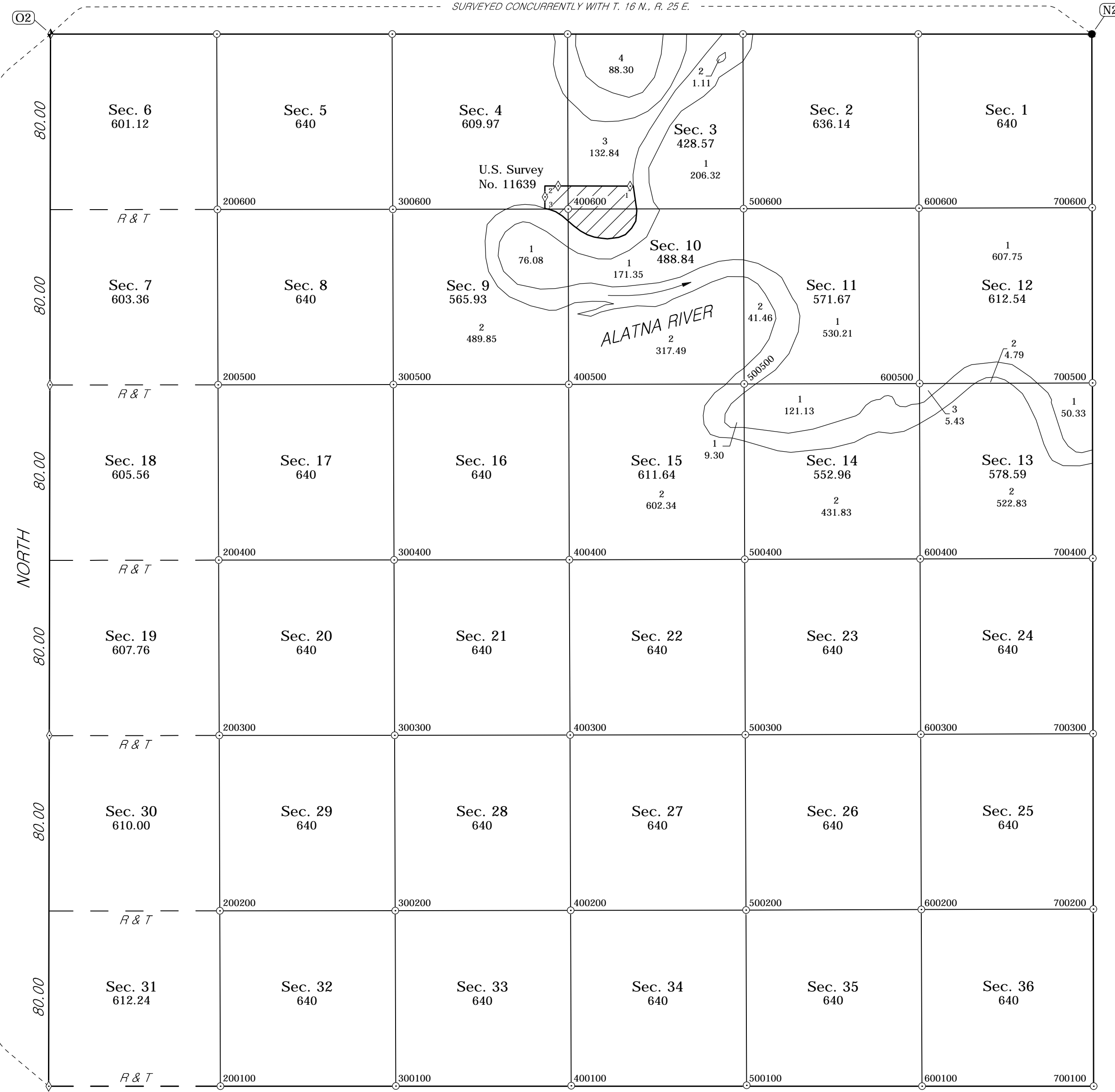
The survey represented by this plat, having been correctly executed in accordance with the requirements of law and the regulations of this Bureau, is hereby accepted.

For the Director

Chief Cadastral Surveyor for Alaska

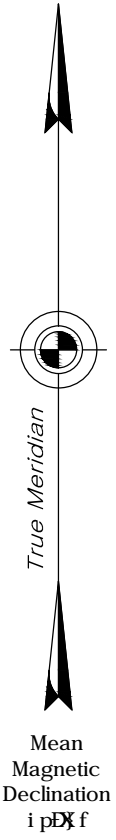
Date

**DRAFT**  
**2015.03.19**

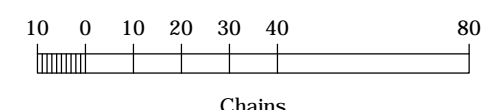


SURVEYED CONCURRENTLY WITH T. 16 N., R. 25 E.

SIXTH GUIDE MERIDIAN EAST



The hydrography shown on this plat identifies the meanders along the ordinary high water mark of water bodies segregated from the land area. The meanders are photogrammetrically interpreted and digitized from orthoimagery acquired from the National Geospatial Agency. The digital meander line data pictorially represent the meanders used to calculate the areas shown on this plat.



Area Surveyed: 22,096.89 Acres

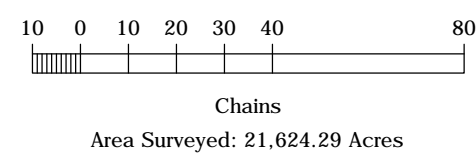
# GROUP NO. 948, T. 15 N., R. 26 E., KATEEL RIVER MERIDIAN, ALASKA

The geographic positions shown below, in NAD\_83(2011) (EPOCH: 2010.0000), define the location of fixed but unmarked corners within the township.

ID	LATITUDE (N)	LONGITUDE (W)
1	589.60	
2	590.00	
3	561.37	
4	550.00	
5	550.00	
6	550.00	
7	550.00	
8	550.00	
9	550.00	
10	550.00	
11	550.00	
12	550.00	
13	550.00	
14	550.00	
15	550.00	
16	550.00	
17	550.00	
18	550.00	
19	550.00	
20	550.00	
21	550.00	
22	550.00	
23	550.00	
24	550.00	
25	550.00	
26	550.00	
27	550.00	
28	550.00	
29	550.00	
30	550.00	
31	550.00	
32	550.00	
33	550.00	
34	550.00	
35	550.00	
36	550.00	



The hydrography shown on this plat identifies the meanders along the ordinary high water mark of water bodies segregated from the land area. The meanders are photogrammetrically interpreted and digitized from orthoimagery acquired from the National Geospatial Agency and from kinematic Global Positioning System methods. The digital meander line data pictorially represent the meanders used to calculate the areas shown on this plat.



### LEGEND

- ◆ = Original Corner (Recovered)
- ◇ = Original Corner (Not Recovered)
- = New Corner (Monumented)
- = New Corner (Not Monumented)
- = Surveyed Line

REFERENCE SHOULD BE MADE TO SHEETS 1-6 FOR SURVEY GROUP INFORMATION

UNITED STATES DEPARTMENT OF THE INTERIOR  
BUREAU OF LAND MANAGEMENT  
Anchorage, Alaska

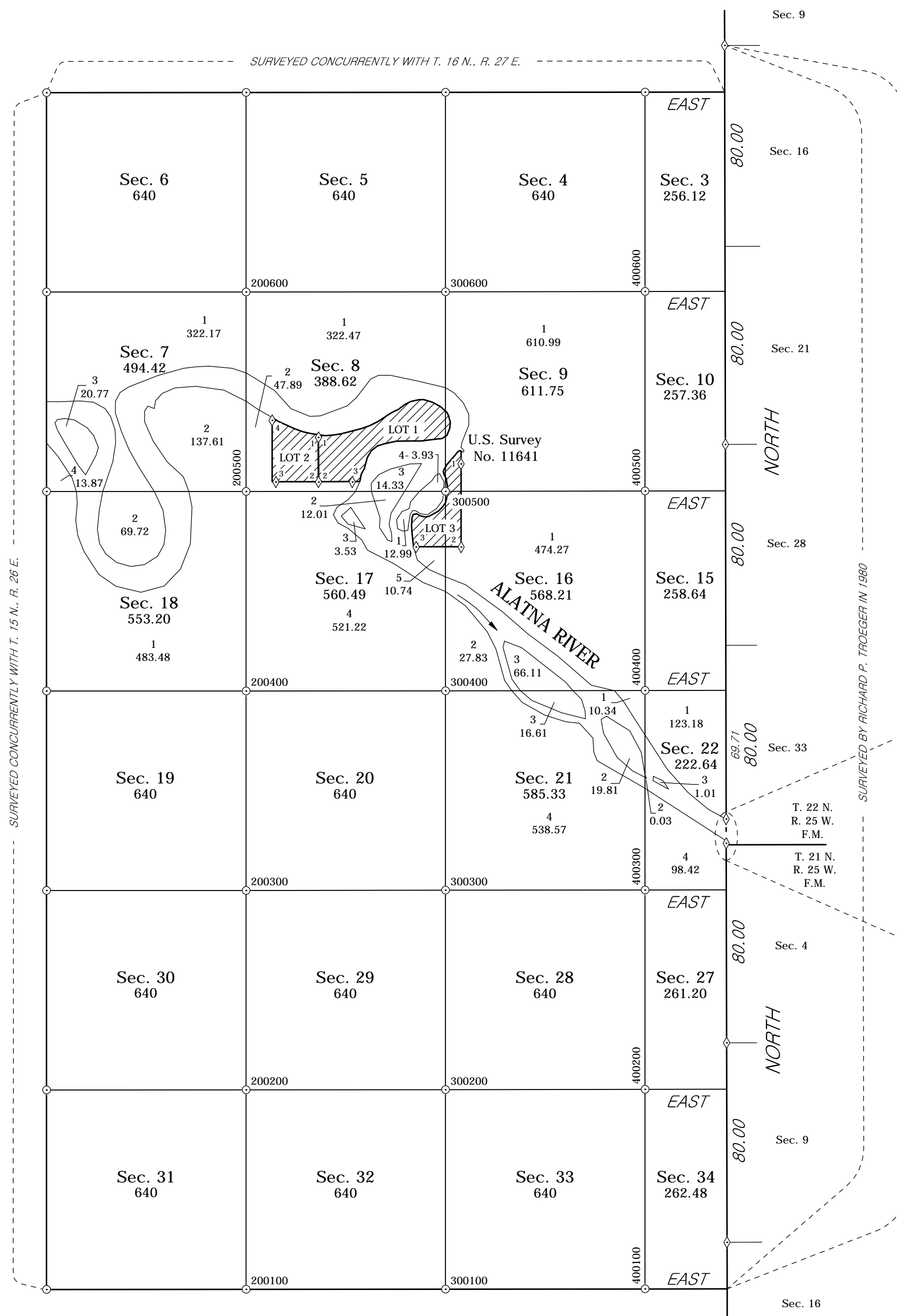
The survey represented by this plat, having been correctly executed in accordance with the requirements of law and the regulations of this Bureau, is hereby accepted.

For the Director

Chief Cadastral Surveyor for Alaska

Date \_\_\_\_\_

# GROUP NO. 948, T. 15 N., R. 27 E., KATEEL RIVER MERIDIAN, ALASKA



The geographic positions shown below, in NAD\_83(2011) (EPOCH: 2010.0000), define the location of fixed but unmarked corners within the township.

ID	LATITUDE (N)	LONGITUDE (W)
&S%SS'***s', fi', ", - S' ' % ' sS) fi& " (%%&		
&S&S'***s' - fi) S", ( & ' ' % ' sS) fi& " ' ' ) "		
&S' SS'***s' (Sfi (&+ ' ' ' % ' sS) fi& " & ) - "		
&S(S'***s' (%fi' ( " + ) ' ' ' % ' sS) fi& " % & ' "		
&S) SS'***s' (&fi&* ' ' ' ' % ' sS) fi& " %S) "		
&S*SS'***s' ( ' fi% " * ( + ' ' ' % ' sS) fi& " S& ' "		
' SS&S'***s', fi', ", - S' ' % ' sS' fi& " ( + ) "		
' SS&S'***s' - fi) S", ( & ' ' % ' sS' fi& " ' ' && ' "		
' SS' SS'***s' (Sfi (&+ ' ' ' % ' sS' fi& " ' % & ' "		
' SS(SS'***s' (%fi' ( " + ) ' ' ' % ' sS' fi& " S%& ' "		
' SS) SS'***s' (&fi&* ' ' ' ' % ' sS' fi& " , * ' "		
( SS*SS'***s' ( ' fi% " * ( + ' ' ' % ' sS' fi& " + S- "		
( SS&S'***s', fi', ", - S' ' % ' sS' fi&S' ) ' , "		
( SS&S'***s' - fi) S", ( & ' ' % ' sS' fi&S' " ' S- "		
( SS' SS'***s' (Sfi (&+ ' ' ' % ' sS' fi&S' " S+ "		
( SS(SS'***s' (%fi' ( " + ) ' ' ' % ' sS' fi&S& , ) S- "		
( SS) SS'***s' (&fi&* ' ' ' ' % ' sS' fi&S&' * &S- "		
( SS*SS'***s' ( ' fi% " * ( + ' ' ' % ' sS' fi&S&' - S- "		

### LEGEND

- ◇ = Original Corner (Not Recovered)
- ⊙ = New Corner (Not Monumented)
- = Surveyed Line

REFERENCE SHOULD BE MADE TO SHEETS 1-6 FOR SURVEY GROUP INFORMATION

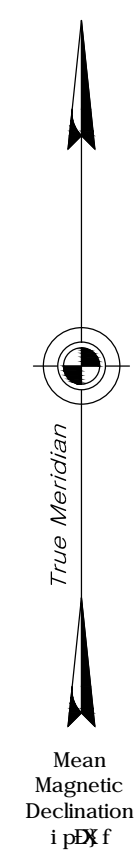
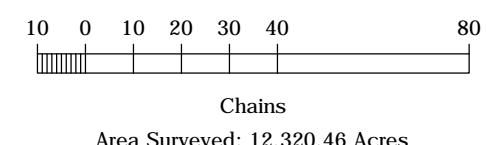
UNITED STATES DEPARTMENT OF THE INTERIOR  
BUREAU OF LAND MANAGEMENT  
Anchorage, Alaska

The survey represented by this plat, having been correctly executed in accordance with the requirements of law and the regulations of this Bureau, is hereby accepted.

For the Director  
Date  
Chief Cadastral Surveyor for Alaska

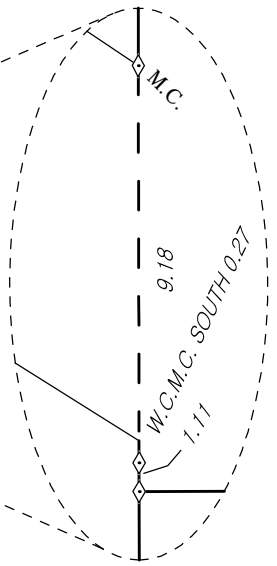
**DRAFT**  
**2015.03.19**

The hydrography shown on this plat identifies the meanders along the ordinary high water mark of water bodies segregated from the land area. The meanders are photogrammetrically interpreted and digitized from 2.5 meter resolution orthoimagery acquired from the Alaska Statewide Digital Mapping Initiative, based on SPOT5 imagery acquired September 2010 and July 2013, and also from from kinematic Global Positioning System methods. The digital meander line data pictorially represent the meanders used to calculate the areas shown on this plat.



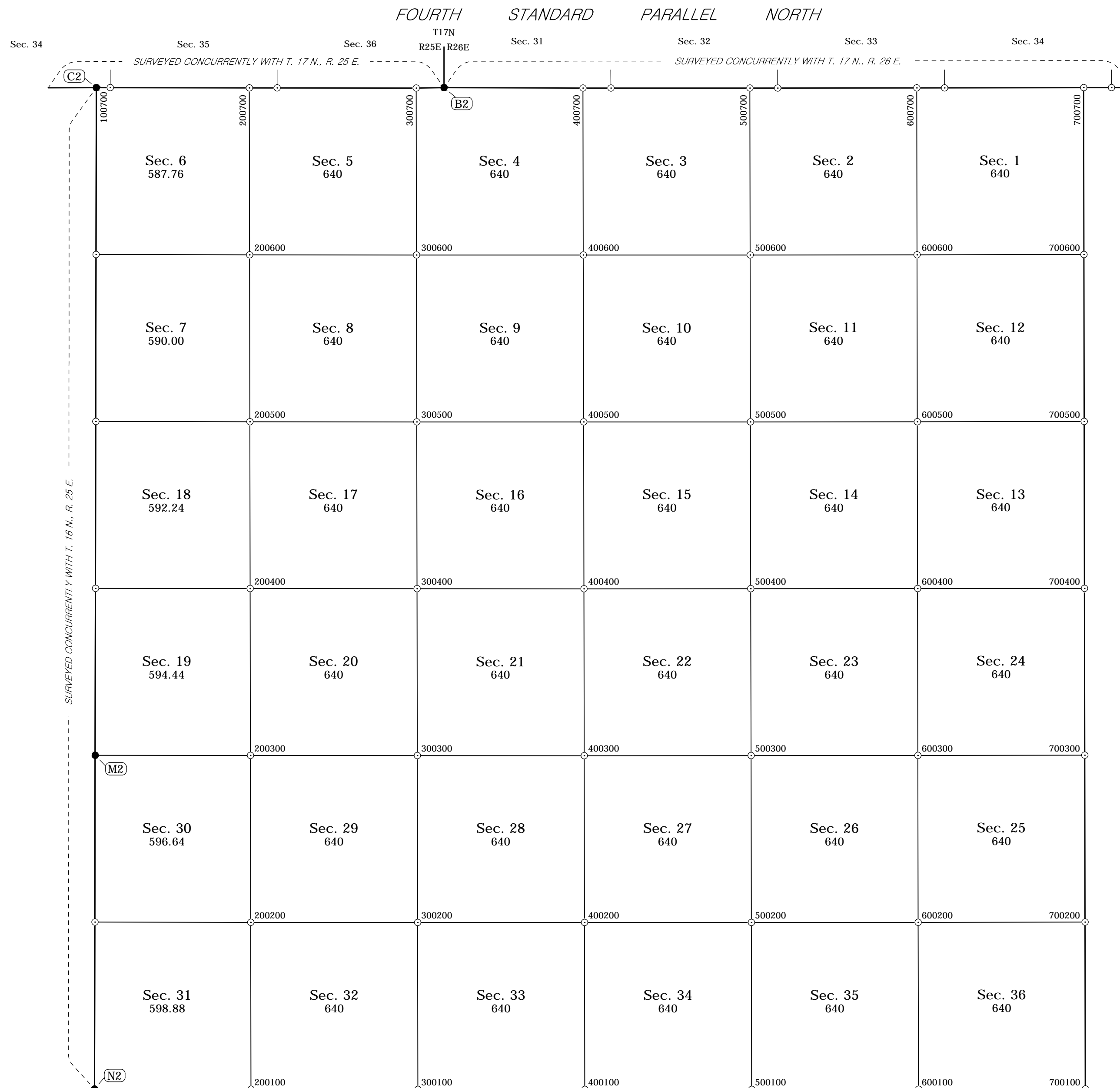
SURVEYED BY RICHARD P. TROEGER IN 1980

WEST BOUNDARY FAIRBANKS MERIDIAN



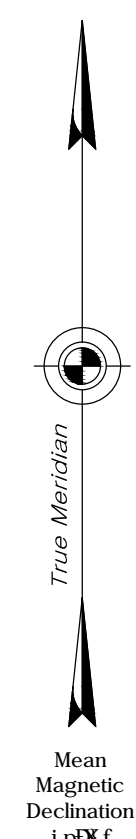


# GROUP NO. 948, T. 16 N., R. 26 E., KATEEL RIVER MERIDIAN, ALASKA



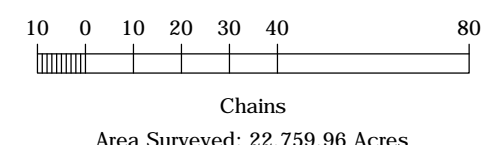
The geographic positions shown below, in NAD\_83(2011) (EPOCH: 2010.0000), define the location of fixed but unmarked corners within the township.

ID	LATITUDE (N)	LONGITUDE (W)
&SS%SS'***s((f%\$) - + " % ' s% fi' " " ' S'		
&SS&SS'***s() f%\$&' (, " " % ' s% fi' " + % "		
&SS' SS'***s() fi) (" (- " " % ' s% fi' " %SS'		
&SS(SS'***s(*fi(") S' " % ' s% fi' " (, * "		
&SS) SS'***s(+fi, " (SS' " % ' s% fi' " , +&'		
&SS*SS'***s(, fi' S' ) % " % ' s% fi' " ) & -		
&SS+SS'***s(- fi&&' S&' " % ' s% fi' " ) * ( * "		
' SS%SS'***s((f%\$) - + " % ' s% fi&%' - ( "		
' SS&SS'***s() f%\$&' (, " " % ' s% fi&&' & &'		
' SS' SS'***s() fi) (" (- " " % ' s% fi&&' ) S'		
' SS(SS'***s(*fi(") S' " % ' s% fi&&' , ) , "		
' SS) SS'***s(+fi, " (SS' " % ' s% fi&' " % + "		
' SS*SS'***s(, fi' S' ) % " % ' s% fi&' " ( + "		
' SS+SS'***s(- fi&&' S&' " % ' s% fi&' " + , + "		
( SS%SS'***s((f%\$) - + " % ' s% fi&' ) ' + "		
( SS&SS'***s() f%\$&' (, " " % ' s% fi&' + , "		
( SS' SS'***s() fi) (" (- " " % ' s% fi&' - - - "		
( SS(SS'***s(*fi(") S' " % ' s% fi&' & % "		
( SS) SS'***s(+fi, " (SS' " % ' s% fi&' ( * "		
( SS*SS'***s(, fi' S' ) % " % ' s% fi&' * - ) "		
( SS+SS'***s(- fi&&' S&' " % ' s% fi&' - & + "		
) SS%SS'***s((f%\$) - + " % ' s% fi&' ) - % ( % "		
) SS&SS'***s() f%\$&' (, " " % ' s% fi&' - " & ) "		
) SS' SS'***s() fi) (" (- " " % ' s% fi&' ) - ( ( - "		
) SS(SS'***s(*fi(") S' " % ' s% fi&' ) - " * S' "		
) SS) SS'***s(+fi, " (SS' " % ' s% fi&' ) - " + , "		
) SS*SS'***s(, fi' S' ) % " % ' s% fi&' ) - " % &'		
) SS+SS'***s(- fi&&' S&' " % ' s% fi&' ) S' + "		
* SS%SS'***s((f%\$) - + " % ' s% fi( + ) "		
* SS&SS'***s() f%\$&' (, " " % ' s% fi( + , &&'		
* SS' SS'***s() fi) (" (- " " % ' s% fi( + , - - "		
* SS(SS'***s(*fi(") S' " % ' s% fi( + - + "		
* SS) SS'***s(+fi, " (SS' " % ' s% fi( , " S' ) "		
* SS*SS'***s(, fi' S' ) % " % ' s% fi( , " % S' "		
* SS+SS'***s(- fi&&' S&' " % ' s% fi( , " & S. "		
+ SS%SS'***s((f%\$) - + " % ' s% fi' " " (, "		
+ SS&SS'***s() f%\$&' (, " " % ' s% fi' " " (, "		
+ SS' SS'***s() fi) (" (- " " % ' s% fi' " " (, "		
+ SS(SS'***s(*fi(") S' " % ' s% fi' " " (, "		
+ SS) SS'***s(+fi, " (SS' " % ' s% fi' " " (, "		
+ SS*SS'***s(, fi' S' ) % " % ' s% fi' " " (, "		
+ SS+SS'***s(- fi&&' S&' " % ' s% fi' " " (, "		



**LEGEND**  
 ● = New Corner (Monumented)  
 ○ = New Corner (Not Monumented)  
 — = Surveyed Line

THIRD STANDARD PARALLEL NORTH



REFERENCE SHOULD BE MADE TO SHEETS 1-6 FOR SURVEY GROUP INFORMATION

UNITED STATES DEPARTMENT OF THE INTERIOR  
 BUREAU OF LAND MANAGEMENT  
 Anchorage, Alaska

The survey represented by this plat, having been correctly executed in accordance with the requirements of law and the regulations of this Bureau, is hereby accepted.

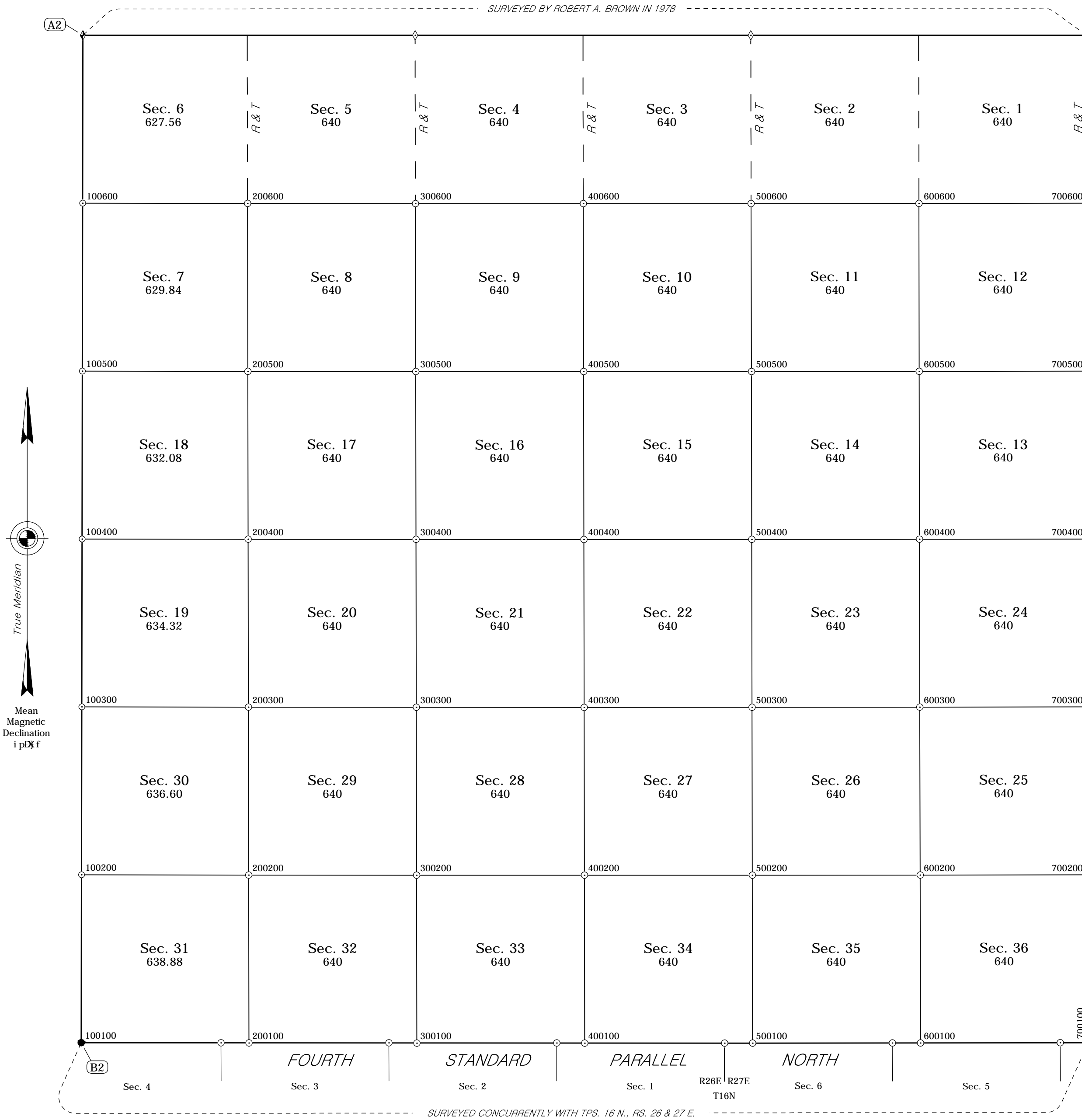
For the Director  
 \_\_\_\_\_  
 Date  
 Chief Cadastral Surveyor for Alaska

**DRAFT**  
 2015.03.19



# GROUP NO. 948, T. 17 N., R. 26 E., KATEEL RIVER MERIDIAN, ALASKA

SURVEYED BY ROBERT A. BROWN IN 1978



The geographic positions shown below, in NAD\_83(2011) (EPOCH: 2010.0000), define the location of fixed but unmarked corners within the township.

ID	LATITUDE (N)	LONGITUDE (W)	ID	LATITUDE (N)	LONGITUDE (W)
SS%SS	***s(-fi&&' S&'' %)' s% fiS% +, &'' (SS(SS'***s) %fi), '' %' '' %' sS-fi&'' -S'				
%SS&SS	***s) Sfi%' @ (''' %' s% fiS% +, %'' (SS) SS'***s) &fi) S'' %S' '' %' sS-fi&'' %*''				
%SS' SS	***s) %fiS'' &S'' '' %' s% fiS% ++'' (SS*SS'***s) ' fi( &'' S) '' %' sS-fi&'' +S''				
%SS(SS'***s) %fi)	'' %' '' %' s% fiS% ++'' (SS) SS'***s) Sfi%' @ (''' %' sS+fi%' ( ('				
%SS) SS	***s) &fi) S'' %S' '' %' s% fiS% ++'' (SS&SS'***s) Sfi%' @ (''' %' sS+fi%' ( ('				
%SS* SS	***s) ' fi( &'' S' %'' %' s% fiS% ++'' (SS' SS'***s) %fiS'' &S'' '' %' sS+fi%' ( '*))				
&SS%SS	***s(-fi&&' S&'' %)' s% fi(- &'' '' SS(SS'***s) %fi), '' %' '' %' sS+fi%' (, %S'				
&SS&SS	***s) Sfi%' @ (''' %' s% fi) S'' %S' '' (SS) SS'***s) &fi) S'' %S' '' %' sS+fi%' ( -'''				
&SS' SS	***s) %fiS'' &S'' '' %' s% fi) S'' %S' '' (SS*SS'***s) ' fi( &'' S) '' %' sS+fi%' ( %&&''				
&SS(SS'***s) %fi)	'' %' '' %' s% fi) %' S, '' %' %SS&SS'***s(-fi&&' S&'' %)' sS) fiS&'' (, )				
&SS) SS	***s) &fi) S'' %S' '' %' s% fi) %' (+' %SS&SS'***s) Sfi%' @ (''' %' sS) fiS&'' * &''				
&SS* SS	***s) ' fi( &'' S) '' %' s% fi) %' , +'' %SS' SS'***s) %fiS'' &S'' '' %' sS) fiS&'' * (				
' SS%SS	***s(-fi&&' S&'' %)' s% fi' , " S' ( '' %SS(SS'***s) %fi), '' %' '' %' sS) fiS&'' +%				
' SS&SS	***s) Sfi%' @ (''' %' s% fi' , " +'' %SS) SS'***s) &fi) S'' %S' '' %' sS) fiS&'' +%				
' SS' SS	***s) %fiS'' &S'' '' %' s% fi' , " , ( '' %SS*SS'***s) ' fi( &'' S) '' %' sS) fiS&'' , +%				
' SS(SS'***s) %fi)	'' %' '' %' s% fi' , " -'' %SS&SS'***s(-fi&&' S&'' %)' sS&fi) S'' %' @				
' SS) SS	***s) &fi) S'' %S' '' %' s% fi' -'' S+'' %SS&SS'***s) Sfi%' @ (''' %' sS&fi) S'' %' @				
' SS* SS	***s) ' fi( &'' S) '' %' s% fi' -'' %' +'' %SS' SS'***s) %fiS'' &S'' '' %' sS&fi) S'' %' @				
( SS%SS	***s(-fi&&' S&'' %)' sS-fi&'' &S' ( '' %SS(SS'***s) %fi), '' %' '' %' sS&fi) S'' %' @				
( SS&SS	***s) Sfi%' @ (''' %' sS-fi&'' ( '+' %SS) SS'***s) &fi) S'' %S' '' %' sS&fi) S'' %' @				
( SS' SS	***s) %fiS'' &S'' '' %' sS-fi&'' +S'' %SS' SS'***s) ' fi( &'' S) '' %' sS&fi) S'' %' @				

### LEGEND

- ◆ = Original Corner (Recovered)
- ◇ = Original Corner (Not Recovered)
- = New Corner (Monumented)
- = New Corner (Not Monumented)
- = Surveyed Line
- - - R & T = Random and True Line

REFERENCE SHOULD BE MADE TO SHEETS 1-6 FOR SURVEY GROUP INFORMATION

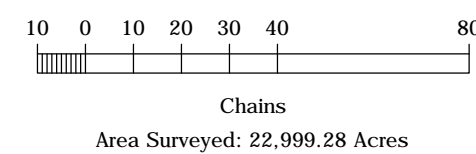
UNITED STATES DEPARTMENT OF THE INTERIOR  
BUREAU OF LAND MANAGEMENT  
Anchorage, Alaska

The survey represented by this plat, having been correctly executed in accordance with the requirements of law and the regulations of this Bureau, is hereby accepted.

For the Director

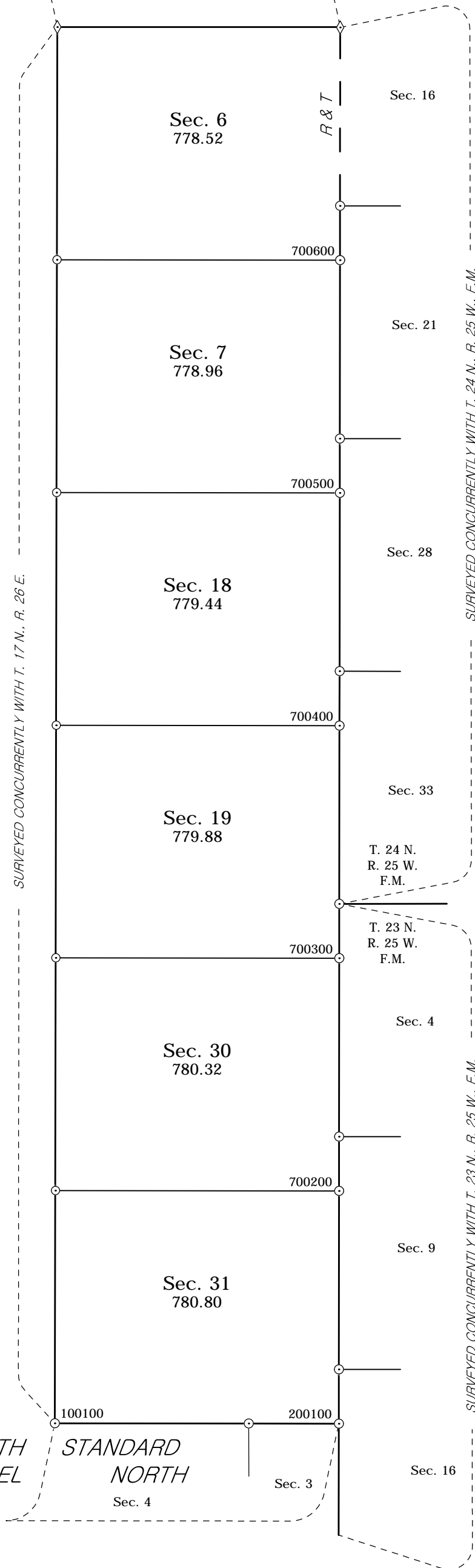
Chief Cadastral Surveyor for Alaska

Date



# GROUP NO. 948, T. 17 N., R. 27 E., KATEEL RIVER MERIDIAN, ALASKA

SURVEYED BY  
ROBERT A. BROWN  
IN 1978



The geographic positions shown below, in NAD\_83(2011) (EPOCH: 2010.0000), define the location of fixed but unmarked corners within the township.

ID	LATITUDE (N)	LONGITUDE (W)
&SS%SS'***s(-fi&&'S&'%'sSSfiS-''+S)~		
&SS&SS'***s)Sfi%(')&'%'%'sSSfiS-''+S)~		
&SS'SS'***s)%fiS%'&S'%'%'sSSfiS-''+S)~		
&SS(S'SS'***s)%fi,'%'%'%'sSSfiS-''+S)~		
&SS)SS'***s)&fi)S''%'%'%'sSSfiS-''+S)~		
&SS*SS'***s)'fi(&'S)'%'%'%'sSSfiS-''+S)~		

### LEGEND

- ◊ = Original Corner (Not Recovered)
- = New Corner (Not Monumented)
- = Surveyed Line
- R & T = Random and True Line

REFERENCE SHOULD BE MADE TO SHEETS 1-6 FOR SURVEY GROUP INFORMATION

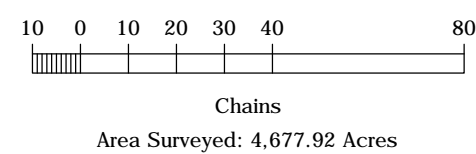
UNITED STATES DEPARTMENT OF THE INTERIOR  
BUREAU OF LAND MANAGEMENT  
Anchorage, Alaska

The survey represented by this plat, having been correctly executed in accordance with the requirements of law and the regulations of this Bureau, is hereby accepted.

For the Director

Chief Cadastral Surveyor for Alaska

Date

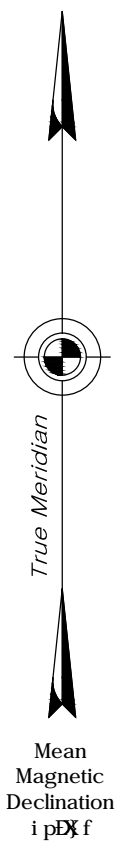
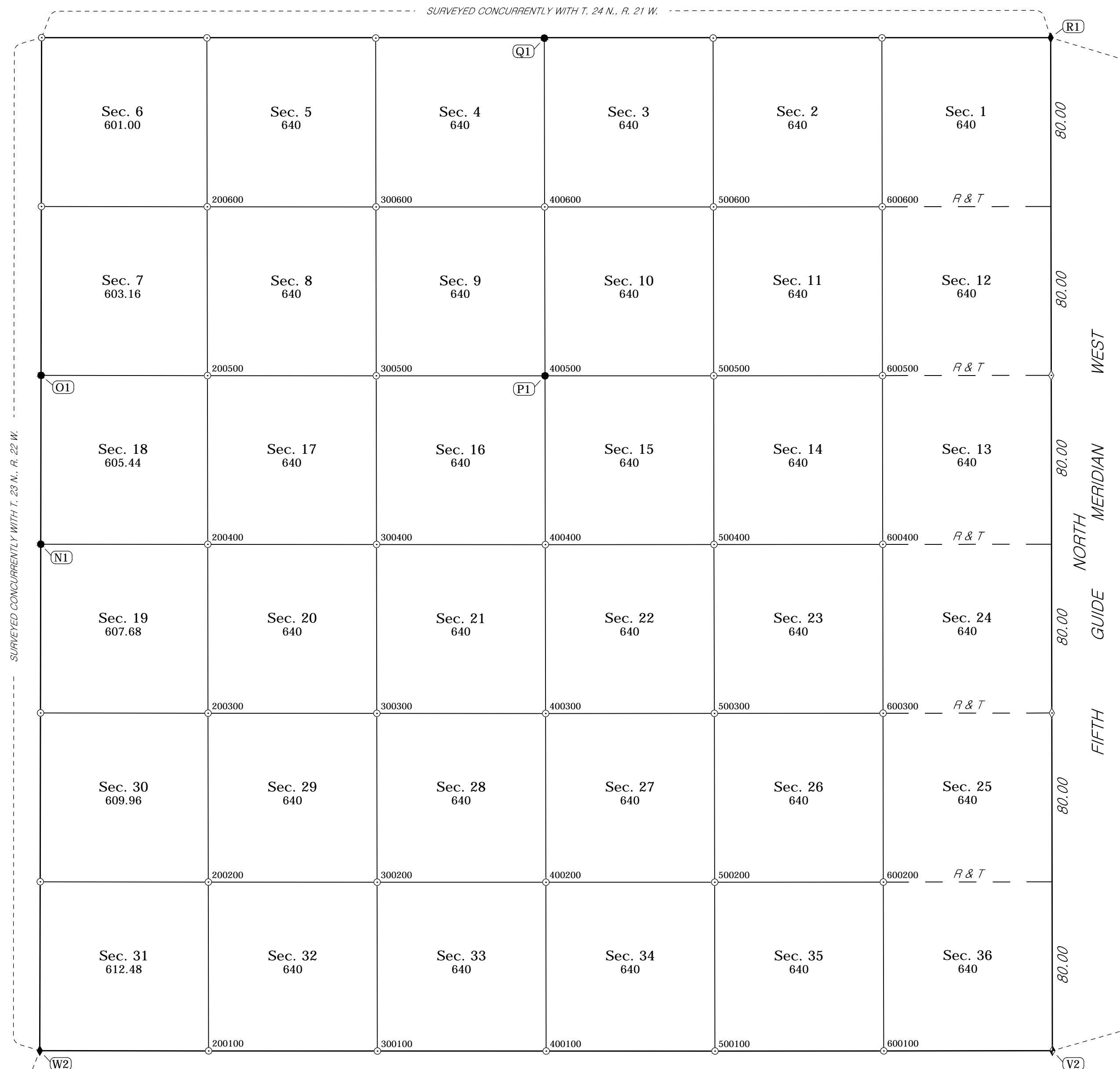


**DRAFT**  
2015.03.19

# GROUP NO. 948, T. 23 N., R. 21 W., FAIRBANKS MERIDIAN, ALASKA

The geographic positions shown below, in NAD\_83(2011) (EPOCH: 2010.0000), define the location of fixed but unmarked corners within the township.

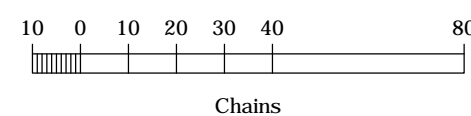
ID	LATITUDE (N)	LONGITUDE (W)
Q1	603.16	400600
O1	605.44	200500
PI	607.68	400400
N1	609.96	200400
W2	612.48	200100



SURVEYED CONCURRENTLY WITH T. 23 N., R. 22 W.

SURVEYED BY RICHARD C. DAVIS IN 1976

SURVEYED BY RICHARD P. TROEGER IN 1980



Area Surveyed: 22,839.72 Acres

### LEGEND

- ◆ = Original Corner (Re monumented)
- ◊ = Original Corner (Recovered)
- ◊ = Original Corner (Not Recovered)
- = New Corner (Monumented)
- = New Corner (Not Monumented)
- = Surveyed Line
- - - R & T = Random and True Line

REFERENCE SHOULD BE MADE TO SHEETS 1-6 FOR SURVEY GROUP INFORMATION

UNITED STATES DEPARTMENT OF THE INTERIOR  
BUREAU OF LAND MANAGEMENT  
Anchorage, Alaska

The survey represented by this plat, having been correctly executed in accordance with the requirements of law and the regulations of this Bureau, is hereby accepted.

For the Director

Chief Cadastral Surveyor for Alaska

Date \_\_\_\_\_

**DRAFT**  
**2015.03.19**